

WHAT IS IT?

SupPressa™ is a rapid automated fire suppression system that detects and extinguishes fire outbreaks.

The result is better protection against complete site shutdown, and keeps you operational with minimal downtime.

HOW DOES IT WORK?

A series of pressurised tubing and nozzles are installed around your baling equipment.

One of the lines detects a fire outbreak and depressurises upon fire impact. This then activates the secondary line to expell the suppressant through the nozzles and extinguishes the fire within seconds.

The system also contains manual override buttons for early operator intervention, which will then douse the entire equipment for full effect.

WHY NOW?

There has never been a more important time to protect your business from a catastrophic fire outbreak.

With increased volumes of recycled materials, and more lithium batteries produced year on year to power our electricals, there are increased risks these days on fires within the recycling industry.

IT'S TIME TO ACT TODAY!

Protect your staff, assets and business with...

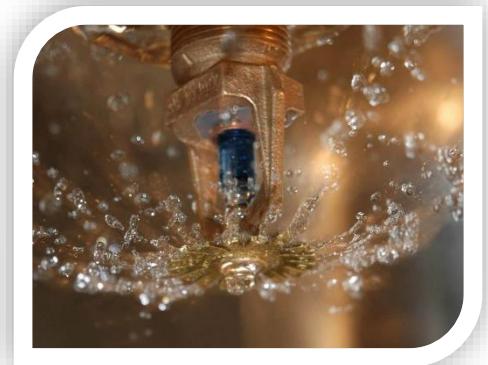
SupPressa™

As leading baler and conveyor manufacturers, Presona believe safety, security and employee protection is paramount, we have taken this to a new level with the development of SupPressa™ – a fire mitigating solution that protects your business, assets and staff.



DON'T SETTLE FOR LESS...

We work with leading fire suppression specialists Fireward – to ensure that maximum safety is at the forefront for your reassurance.



REAP THE BENEFITS...

- Safe workplace for staff
- Protect your business
- Stop long term shut down
- Reduce insurance costs

RECYCLING INDUSTRY

Recycling plant equipment can be a dangerous area that comes with additional fire risks.

Three main elements is all it takes for a fire outbreak:

- Heat
- Fuel
- Oxygen

Simply eliminating one of these elements will greatly reduce the risk of a fire outbreak.

Environments in which recycling equipment is used, makes is hard to eliminate and why there is an increased presence of fires around balers – especially as more and more lithium batteries are produced and wrongly discarded each year from our electronic devices.

70% of business that encounter a major fire never re-open.

Don't let your business become a statistic. Protect your recycling equipment, business and staff with a SupPressa™ today.

In partnership with...



CONTACT US

(+44) 01278 444 527
sales@presona.co.uk

www.presona.co.uk

Covering all angles...



BALER PROTECTION

It's not uncommon for the stray lithium-ion battery making its way into the baler chamber at the compaction stage.

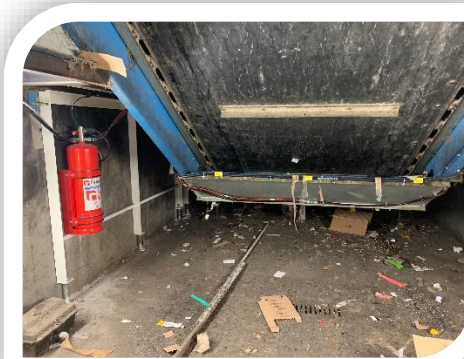
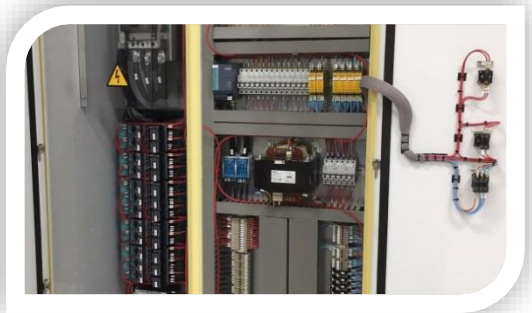
This can lead to a violent reaction resulting in a major fire. The SupPressa™ covers vital areas such like:

- The tying unit
- The hydraulic unit
- The press chamber

ELECTRICAL PROTECTION

Electrical cabinets can suffer with malfunctions or overheating of components - Sparking/arcing and wire fatigue.

Any of these can cause devastating fires within the cabinet. With SupPressa™, the system is run near all major components to detect any issues with the key items.



CONVEYOR AND PIT

Conveyors and the pit sections can often build up with material, this in turn can cause the materials to get caught within the mechanical gearing and generate friction leading to fires.

Trigger lines and nozzles are run along the underside of the valances, pit plates and chasis to ensure maximum protection.

SAFETY CRITICAL INSPECTIONS

Taking care of the SupPressa™ is vital for maintaining the safety and wellbeing of your staff. This is why we work closely with Fireward to ensure maximum efficiency at your sites.

It's strongly advised that the system is serviced every 6 months and carried out by qualified and trained engineers in the fire industry. We will arrange this with yourself and Fireward for peace of mind.

All you have to do is carry out routine daily checks for damage and correct pressures etc.

